

ASD Attitude Tracking Poll

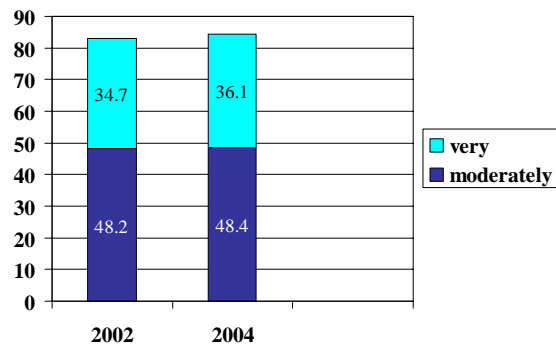
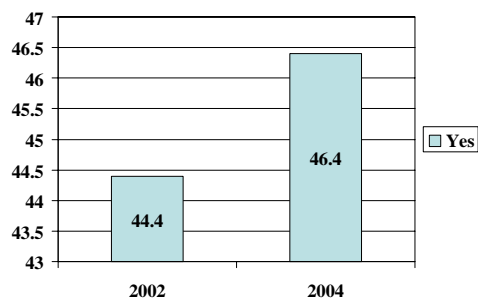
November 2004

2002 & 2004 data represents Anchorage adults. 2003 data is available but is limited to supervoters and is not comparable.

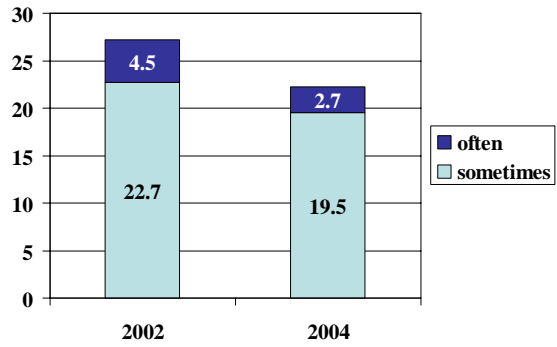
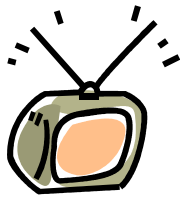
Accessed
ASD Web site?



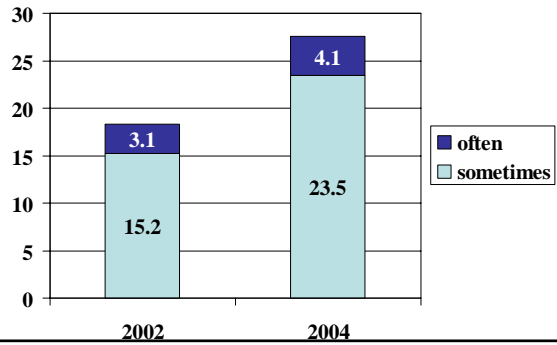
Web site
usefulness



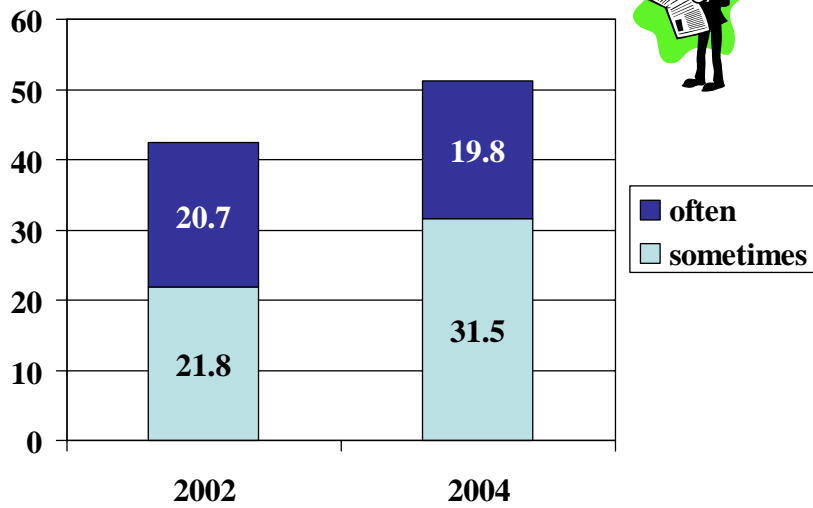
Watch meetings on channel 14?



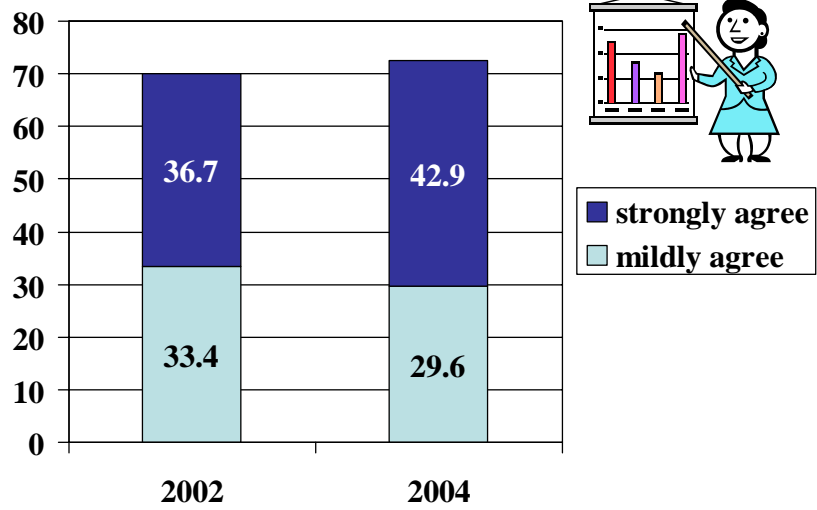
Watch other programming?



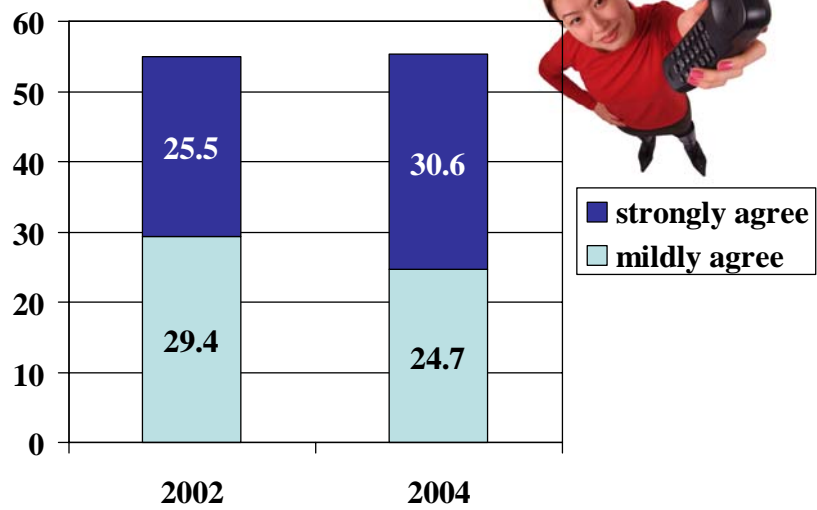
Read news ad?



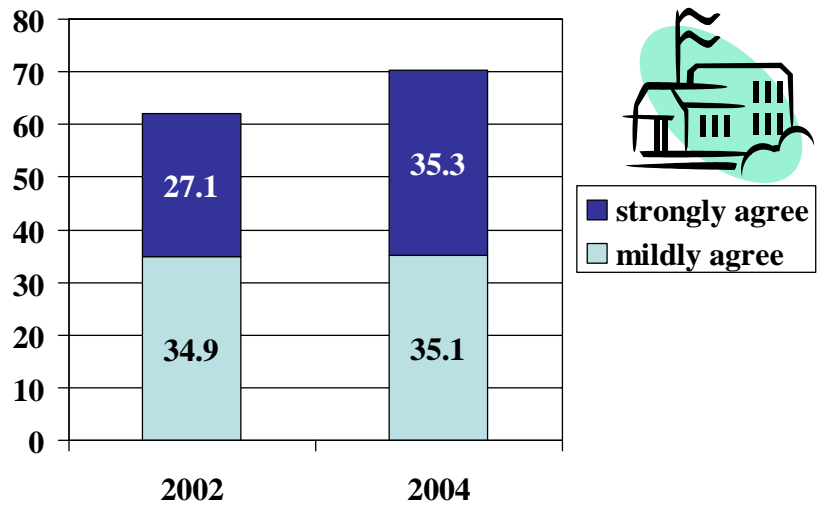
Superintendent is doing a good job



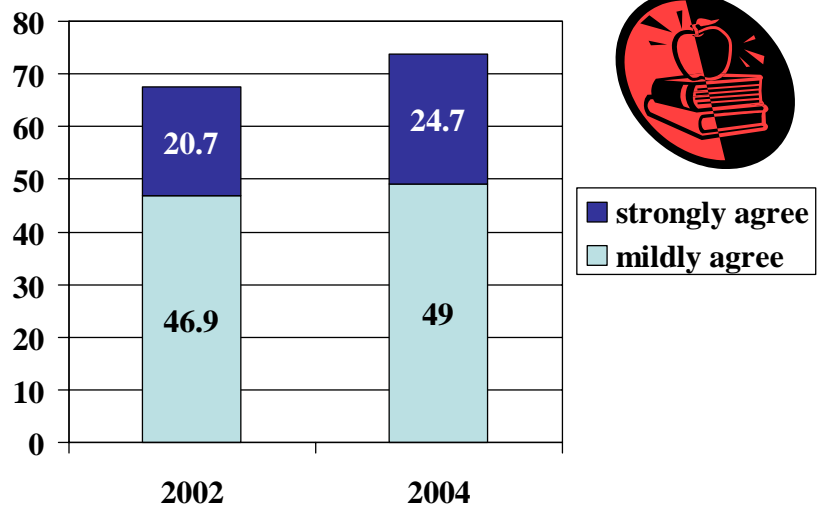
Superintendent is accessible



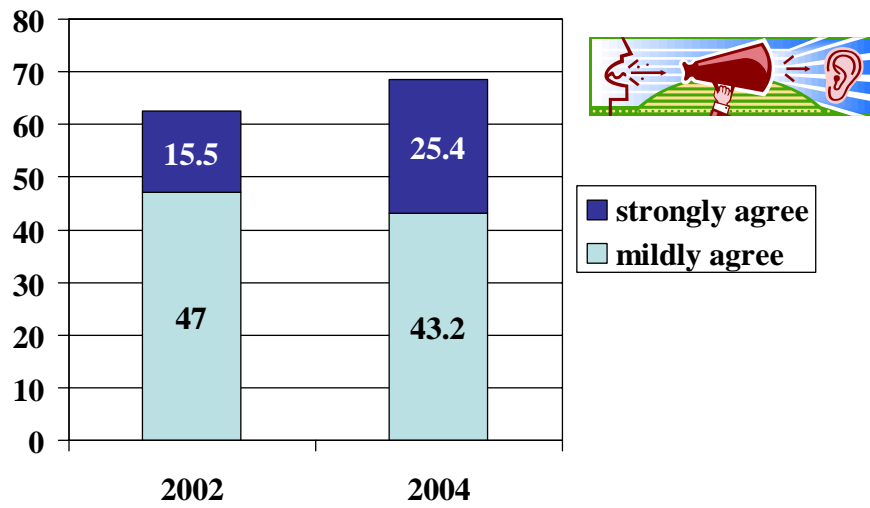
Satisfied with neighborhood school's performance



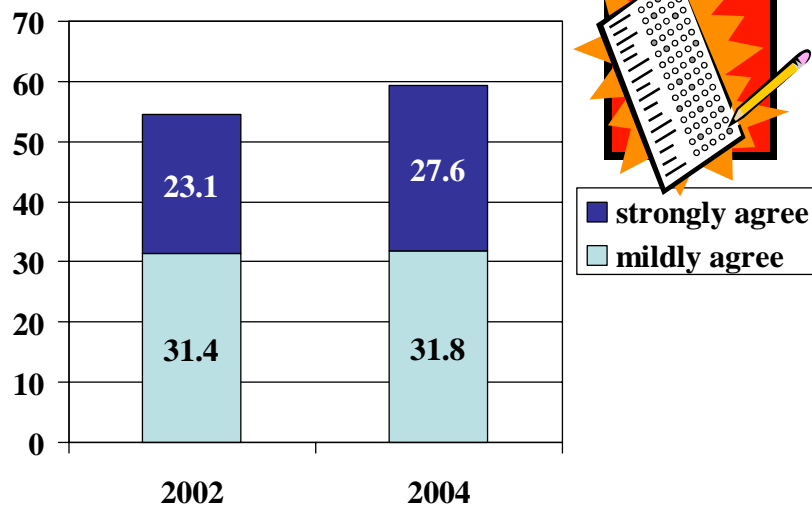
Satisfied with the performance of ASD

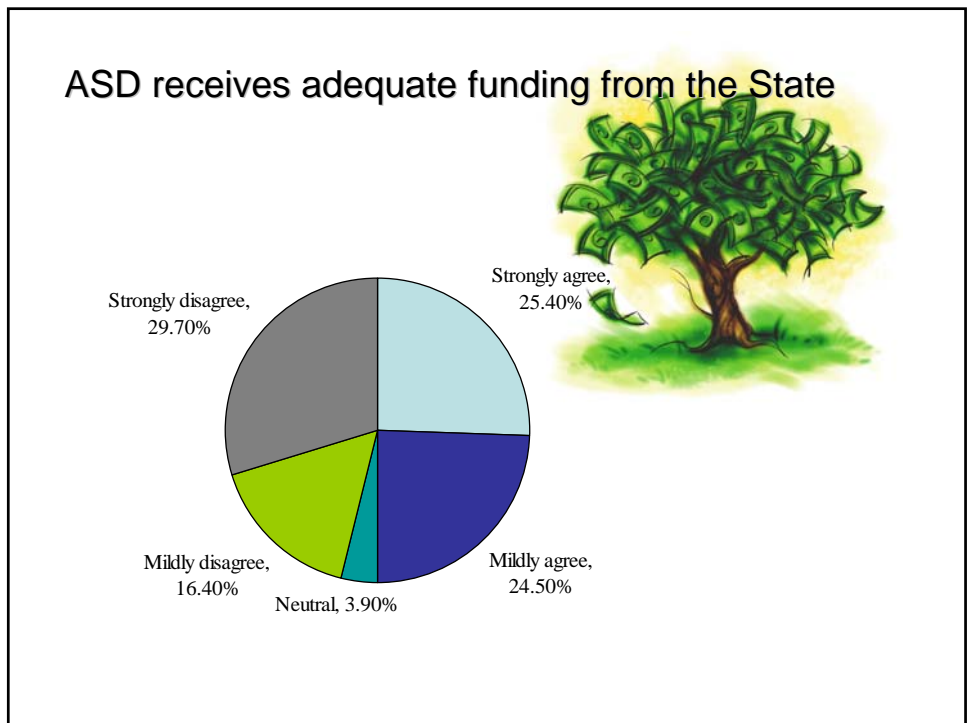
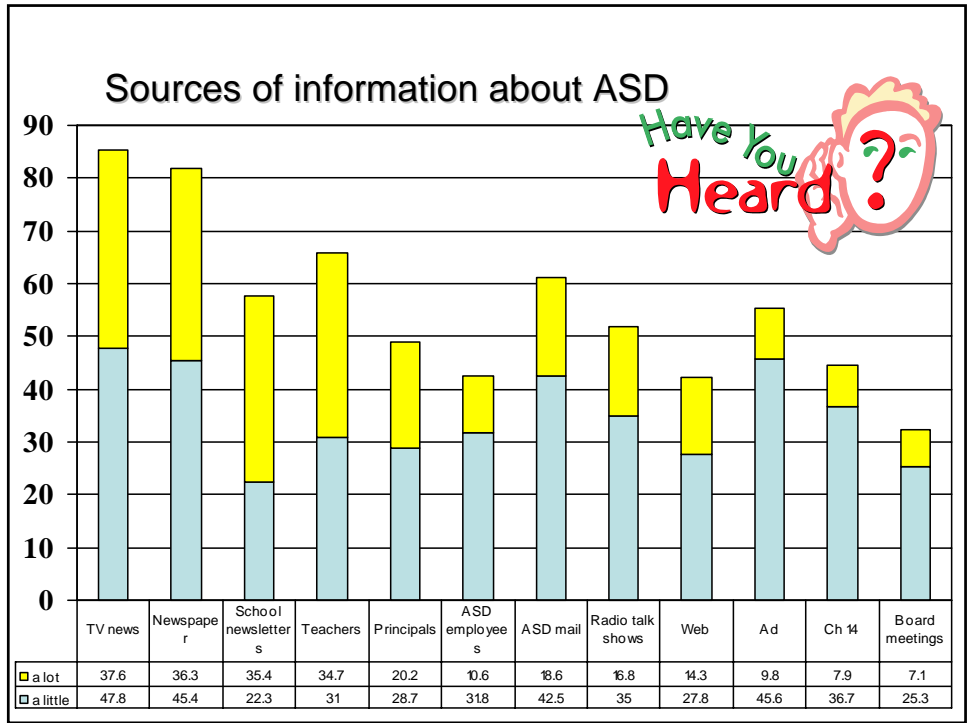


ASD listens to community concerns



Test scores are lower than they should be

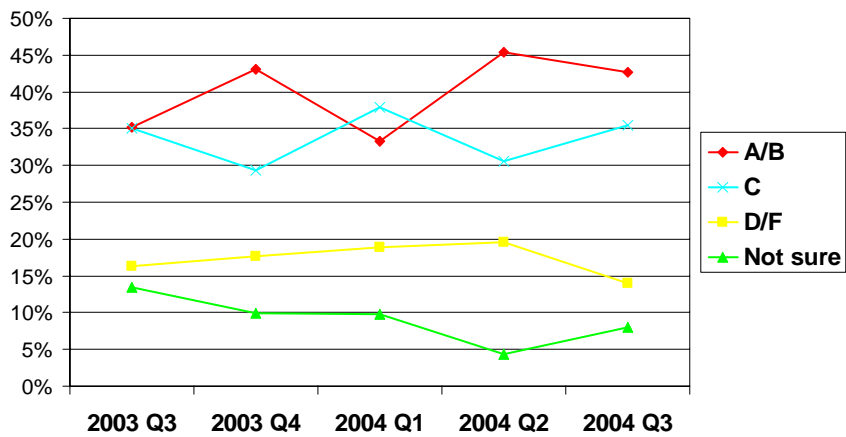




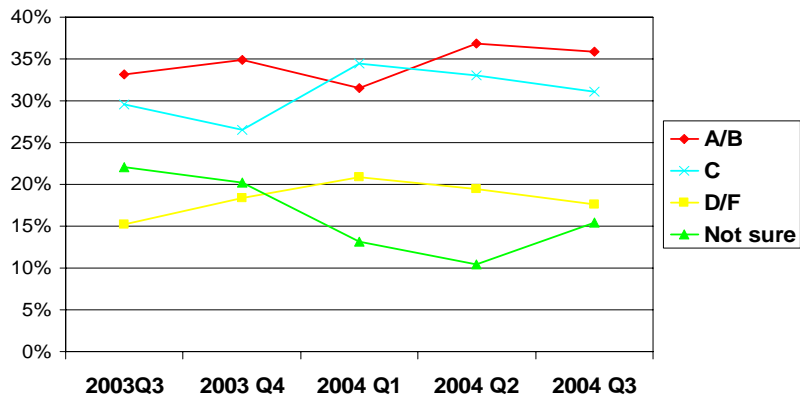
Quarterly Attitude Survey

Population is limited to super-voters. District and community events can impact attitudes at various times of the year. Comparing data for the same quarter from year-to-year can be helpful (i.e. Q3 2003 vs Q3 2004).

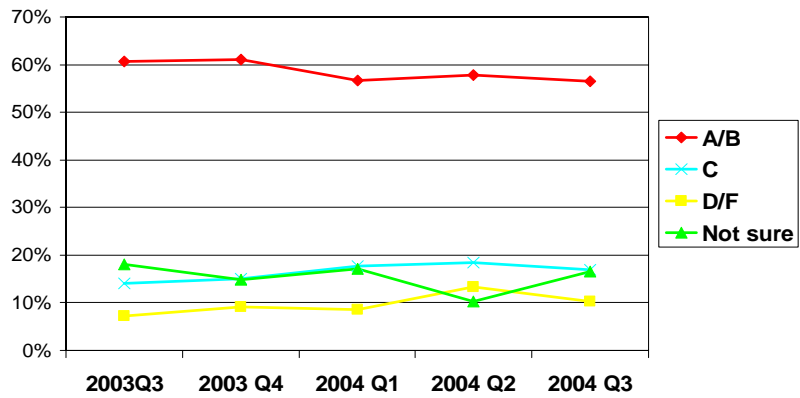
Grade Anchorage public schools



Grade for School Board



Grade for Carol Comeau



ASD Positive/Negative

